

# Role Description

## Anaesthetic Healthcare Practitioners (Technician)

<b>Job ad reference:</b>	RBH411983		
<b>Location*:</b>	Herston	<b>Unit/Department:</b>	Anaesthetic Department Royal Brisbane and Women's Hospital
<b>Status:</b>	Multiple permanent full-time positions available	<b>Classification:</b>	HP2
<b>Salary Range:</b>	\$65,090 - \$87,772 per annum (plus superannuation and leave loading benefits)	<b>Closing Date:</b>	Tuesday, 5 <sup>th</sup> April 2022
<b>Contact name:</b>	Vicki Swaine	<b>Contact number:</b>	(07) 3646 0531
<b>Online applications:</b>	<a href="http://www.smartjobs.qld.gov.au">www.smartjobs.qld.gov.au</a>		

\* Please note: there may be a requirement to work at other facilities located across Metro North Health.

\*\*Future recurring vacancies may also be filled through this recruitment process at any location across Metro North Health.

\*\*\*Applications from third parties will not be accepted.

### Purpose of the role

The purpose of this role is to:

- Deliver professional patient centred care within an evidence-based quality interdisciplinary health care environment
- Demonstrate professional judgment in undertaking work within the scope and objectives of current procedures, standards and guidelines
- Provide professional skilled assistance to the Anaesthetist in the safe conduct of all Anaesthetic Procedures across the organisation

### Context and Delegations

- This position works under the guidance of the Director and Assistant Director, Anaesthetic Healthcare Practitioners

### Key Accountabilities

This successful applicant will carry out the following key accountabilities in accordance with the Metro North Health's values:

- Prepare the anaesthetic environment and assist the Anaesthetist during all phases of anaesthesia
- Provide skilled assistance for all elective and emergent anaesthetic procedures
- Maintaining professional standards
- Participate in and contribute to educational activities held within the department
- Participate in education and training of Anaesthetic trainees and graduates
- Participate in the departmental roster, including continuous shift rotations of up to 10-hour duration and on call
- Demonstrate initiative and participate as an effective member of a multi-disciplinary team, ensuring all patient needs are met.
- Provide ethical decision making in the achievement of organisational goals
- Carry out the duties of Shift Co-ordinator as required and ensure all documentation is completed as necessary
- Prepare and maintain equipment in accordance with departmental policy and manufacturers guidelines for maintenance, consumable supplies and auditing processes

- Comply with and utilise procedures, policies, regulations and standards which impact upon the position, including contemporary human resource management requirements and practices, such as workplace health and safety, equal employment opportunity and anti-discrimination policies

## About Metro North Health

Delivering outstanding health services is just one of the ways that we care for our community. Our passion for people is reflected in the way we do our work and live our values every day. We value and nurture our team members so they can provide quality value-based care to our patients across our diverse organisation. Our focus on Value Based Healthcare means we expect our staff to deliver the care the patient needs, no more and no less, to achieve the best quality of life for our community. This passion fuels our collaborative culture of innovation and research.

We embrace the diversity of local and greater communities as we provide services to people throughout Queensland, northern New South Wales and the Northern Territory, in all major health specialities including medicine, surgery, mental health, cancer care, trauma, women’s and newborn care, and more than 30 sub-specialities. Metro North Health services include rural, regional and tertiary hospitals, and community and oral health services.






Our diverse Health Service provides a wide variety of rewarding career paths across our tertiary/quaternary referral hospitals, secondary hospitals, community health centres, residential and extended care facilities and regional community hospitals. We expect our staff and volunteers to translate our values into action through providing high quality connected care that is relevant, efficient and respectful of our patients’ needs and wishes. Our people are passionate about our community and patients, with a focus on putting people first. Come and work where people are at the centre of everything we do and your contribution is truly valued.

Please visit our website for additional information about Metro North Health. <http://metronorth.health.qld.gov.au/>

## Our Vision

Excellent healthcare, working together, strong and healthy communities.

## Metro North Health Values and their corresponding Lominger™ competencies:

				
Respect	Teamwork	Compassion	High performance	Integrity
<ul style="list-style-type: none"> <li>• Interpersonal savvy</li> <li>• Manages conflict</li> <li>• Communicates effectively</li> <li>• Balances stakeholders</li> </ul>	<ul style="list-style-type: none"> <li>• Collaborates</li> <li>• Develops talent</li> <li>• Values differences</li> <li>• Builds effective teams</li> </ul>	<ul style="list-style-type: none"> <li>• Customer / patient focus</li> <li>• Demonstrates self-awareness</li> <li>• Manages ambiguity</li> <li>• Being resilient</li> </ul>	<ul style="list-style-type: none"> <li>• Cultivates innovation</li> <li>• Action oriented</li> <li>• Drives results</li> <li>• Drives vision and purpose</li> </ul>	<ul style="list-style-type: none"> <li>• Decision quality</li> <li>• Ensures accountability</li> <li>• Courage</li> <li>• Manages complexity</li> </ul>

## How you will be assessed

You will be assessed on your ability to demonstrate the following values within the context of the “Key Accountabilities”. The ideal applicant will be able to demonstrate the following:

- **Respect** – demonstrates interpersonal savvy, manages conflict appropriately, communicates effectively and balances the needs of all stakeholders with utmost respect to all people at all times

- **Teamwork** – collaborates effectively, develops talent, values difference and builds effective teams to bring about best use of resources to deliver healthcare services
- **Compassion** – is completely patient / client focussed, demonstrates self-awareness and the effects of behaviour on others, deals with or manages ambiguity and complexity, demonstrates resilience in the delivery of patient services or support in the delivery of services to patients
- **High Performance** – cultivates innovation, is action oriented, drives results and supports Metro North's vision and purpose to exceed expectations of our patients and stakeholders
- **Integrity** – demonstrates sound decision quality, ensures accountability, demonstrates courage in the face of adversity and works effectively / manages complexity to ensure work output and decisions are ethical and invariably of a high standard

### Mandatory qualifications/professional registration/other requirements

- Appointment to this position requires proof of qualification and registration or membership with the appropriate registration authority or association. Evidence of 12 months postgraduate experience is mandatory. Certified copies of the required information must be provided to the appropriate delegate/Director, prior to the commencement of clinical duties.
- Diploma Anaesthetic Technology or recognised equivalent.
- While not mandatory, voluntary registration with Australian Anaesthesia Allied Health Practitioners (AAAHP) would be highly regarded.
- It is a condition of employment for this role for the employee to be, and remain, vaccinated against the following vaccine preventable diseases during their employment ([Health Employment Directive No. 01/16](#)):
  - Measles, mumps, rubella (MMR)
  - Varicella (chicken pox)
  - Pertussis (whooping cough)
  - Hepatitis B
  - Tuberculosis
- It is a condition of employment for this role for the employee to be, and remain, vaccinated against COVID-19 ([Health Employment Directive No. 12/21](#) and [Queensland Health Human Resources Policy B70](#)).

### How to apply

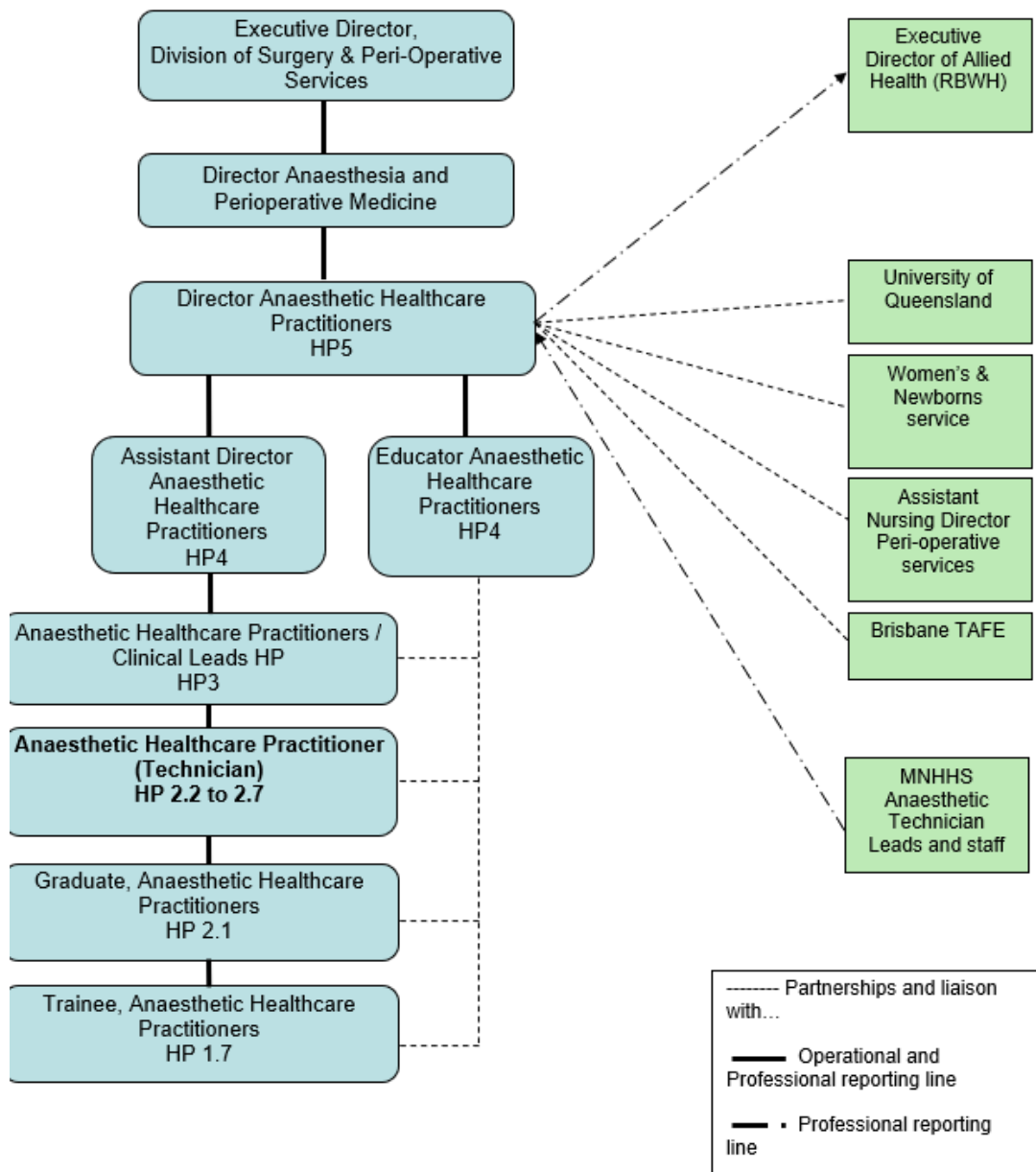
Please provide the following information to the panel to assess your suitability:

1. **A short statement (maximum 2 pages)** on how your experience, abilities, knowledge and personal qualities would enable you to achieve the key accountabilities and meet the technical and behavioural capabilities of the role.
2. **Your current CV or resume, including referees.** You must seek approval prior to nominating a person as a referee. Referees should have a thorough knowledge of your work performance and conduct, and it is preferable to include your current/immediate past supervisor. By providing the names and contact details of your referee/s you consent for these people to be contacted by the selection panel. If you do not wish for a referee to be contacted, please indicate this on your CV or resume.

### Instructions on how to apply

- Submit your application online at [www.smartjobs.qld.gov.au](http://www.smartjobs.qld.gov.au) by the closing date.
- Please note that hand delivered applications will not be accepted.
- Only those persons eligible to work in Australia may be employed by Metro North Health. Prospective employees are required to provide proof of identity and documentary evidence of their right to work in Australia.
- Late applications cannot be submitted online. For a late application to be considered, please arrange approval and submission via the contact officer.

## Organisational structure



### Diversity and Inclusion

We are committed to providing a diverse and inclusive workplace for our people and our community. We encourage people of all genders, races, ages and abilities to apply for roles within Metro North Health and strive to ensure that our workplace is free from all forms of discrimination and harassment.

As an Equal Employment Opportunity (EEO) employer we ensure that our selection processes and employment decisions are undertaken in a non-discriminatory way and are consistent with the requirements of the Anti-Discrimination Act 1991. If there are any reasons that you may have challenges with the recruitment process, please let us know when we contact you.

### Work Health and Safety

We are committed to *Putting People First* to provide better healthcare. This commitment includes a dedicated *People Focussed Safety* culture.

This culture commits to the health, safety and wellbeing of staff, volunteers and other persons, through the provision of a dynamic and comprehensive Health and Safety Management System (HSMS). The HSMS provides for proactive safety initiatives, early injury management practices with a strong focus on a safe and durable return to work.

The provision of a Health and Safety environment within Metro North Health is everyone's responsibility.

### Safety and Quality

Relevant to the position, staff participate in the ongoing education, implementation, monitoring and evaluation of safety and quality initiatives relevant to The National Safety and Quality Health Services Standards 2<sup>nd</sup> Edition and the Australian Council on Healthcare Standards (ACHS).

### Vaccine Preventable Diseases (VPD) Requirements ([Health Employment Directive No. 01/16](#))

It is a condition of employment for this role for the employee to be, and remain, vaccinated against the following vaccine preventable diseases during their employment:

- Measles
- Mumps
- Rubella
- Varicella (chicken pox)
- Pertussis (whooping cough)
- Hepatitis B
- Tuberculosis

Further vaccinations may be required due to particular risks for a role; examples include:

- Hepatitis A – Workers in regular contact with untreated sewerage
- Q Fever – Research or Laboratory staff regularly handling specimens

All new employees who will be working in clinical areas must be assessed for their risk of tuberculosis and screening undertaken if required.

Existing staff that are engaged prior to 1 July 2016 are **not subject** to this condition of employment unless they apply for a role with VPD requirements that is with a different Queensland Health entity (i.e. one Health Service to another Health Service, Department of Health (DoH) to a Health Service, or Health Service to DoH).

## Additional Information

- Applications will remain current for 12 months or for the duration of the vacancy.
- Future vacancies of a temporary, full time and part time nature may also be filled through this recruitment process.
- Health Care Workers in Queensland Health whose occupation poses a potential risk of exposure to blood or body fluids must be immunised against Hepatitis B according to the National Health and Medical Research Council Australian Immunisation Handbook and the Queensland Health Infection Control Guidelines.
- Pre-employment screening, including criminal history and discipline history checks, may be undertaken on persons recommended for employment. Roles providing health, counselling and support services mainly to children will require a Blue Card, unless otherwise exempt. Roles providing services to National Disability Insurance Scheme (NDIS) participants require an NDIS worker screening check.
- Applicants may be required to disclose any pre-existing illness or injury which may impact on their ability to perform the role.
- Applicants will be required to give a statement of their employment as a lobbyist within one (1) month of taking up the appointment. Details are available at:  
<http://www.psc.qld.gov.au/publications/assets/policies/lobbyist-disclosure-policy.pdf>
- Employees who are appointed to Queensland Health may be required to undertake a period of probation appropriate to the appointment. For further information, refer to Probation HR Policy B2  
<https://www.health.qld.gov.au/system-governance/policies-standards/doh-policy/policy/gh-pol-197.pdf>
- All relevant health professionals, who in the course of their duties formulate a reasonable suspicion that a child or youth has been abused or neglected in their home/community environment, have a legislative and a duty of care obligation to immediately report such concerns to Child Safety Services, Department of Communities.

## Metro North Health Executive Structure

